



BSD

LinkLine

Building Systems Design, Inc.

A Newsletter for BSD SoftLink® Customers and Friends

SUMMER 2006

SpecLink®: The Next Generation

As a number of you witnessed at the recent CSI Show and Convention, BSD is well under way with development of SpecLink-E (E for short), a new generation of the SpecLink system. There are many reasons to develop this version from the ground up. We are drawing on more than 10 years of experience and customer feedback on the current version. Our primary goals for embarking on such an expansive and expensive delivery include the following:

- Converting 10-year old desktop database technology to an enterprise-capable, SQL Server 2005, client-server system;
- Enhancing overall network performance, particularly on wide area networks and VPN's, to support multi-site project collaboration using a single master database while also supporting disconnected and standalone document editing;
- Providing an enhanced platform for interoperability with other industry applications including leading CAD programs and cost estimating;
- Replacing an aging word processing component with a modern MS Word-like component that supports better tables management, embedded images, page view (print layout) editing with WYSIWYG header-footer management, etc.;

- Providing "real time" master document updating via the Internet that runs in the background and can be scheduled at night, and
- Supporting a "hands free" client installation that does not require an administrator's attention and can keep itself updated using a single administrator-controlled network or Internet-based install location

While the new system is designed for the enterprise, it is also compact enough to run on a single computer and provide similar benefits to the standalone user. The accompanying screen capture illustrates E's user interface.

The design continues the basic layout of SpecLink+. A navigational tree panel is provided to let the user select a document for viewing and editing. Notes panels are presented on tabs to let you view master notes and create project notes. But in E these panels can be "unpinned" using the push pin icon in the top right corner of the panel, and allowed to "slide" out of view, becoming a tab at the side of the main window. Simply hovering the mouse cursor over a tab causes the panel to slide back into view, where it remains viewable as long as the cursor hovers in the panel, or the panel can be fixed in place by clicking again on the push pin icon.

See "TNG" on page 7

Table of Contents

BSD Exhibits at 2006 Trade Shows	1
SpecLink: The Next Generation	1
CAD & BIM Survey	2
BSD Customer Case Study: Interplan	2
LEED Tips	3
About Your SpecLink & PerSpective Updates	3
New SpecLink Sections	4
Q&A	6
BSD's New Training Facility	7
Training Schedule	8

BSD Exhibits at 2006 Trade Shows

Building Systems Design has refurbished its tradeshow booth for 2006, completely replacing the central tower with a new, open-framework structure topped by a circular illuminated sign. The complicated rear projection screen, internal mirror, and vertically mounted projector in the original tower have been replaced by a large, wide format plasma monitor. The new tower also encloses a storage cabinet with a countertop that's suitable for displaying printed materials and for use as a work surface. Ironically, we now have significantly more storage volume and display space available in a booth that is visually more open and transparent.



BSD's new booth in Las Vegas

The new booth made its debut at the 2006 CSI show and convention in Las Vegas and received many compliments from attendees. CSI conventioners praised the new, more open look of the booth—as well as the improved clarity of the computer image provided in the theater by our new plasma monitor. We scheduled 15 to

See "Trade Shows" on page 5

CAD & BIM Survey

This Spring, we conducted an informal survey among SpecLink subscribers regarding their firms' use of CAD software and Building Information Models. Some people expressed an interest in the results, so here they are. We received 143 responses. Since the survey was intended to elicit information that might influence BSD's development efforts, we presume that those who responded were interested in promoting linking between SpecLink and CAD or BIM.

Question 1. In our organization we use:

Autodesk AutoCAD (plain)	50 percent
Autodesk Architectural Desktop	60 percent
Autodesk Revit Building	20 percent
Bentley Microstation	17 percent
Bentley Architecture	7 percent
Graphisoft ArchiCAD	11 percent
Nemetschek Vectorworks	< 2 percent
Other	20 percent

"Other" includes DataCAD, SketchUp, PowerCAD, Cadvance, structural and ME editions of AutoCAD and Microstation, Sigma Design, ACAD, and nothing (a spec consultant). The percentages add up to more than 100 percent because many respondents reported using two or more different CAD packages or 3D CAD/BIM with 2D CAD. A significant percentage appear to be uncertain as to which is the best package to use (i.e. trying them all).

Question 2. How important is it to you that SpecLink be able to retrieve and utilize information residing in CAD project files?

Very important — get on with it!	48 percent
It would be nice but it's not presently essential.	45 percent
Not important at all.	4 percent
Other (mostly positive comments)	3 percent

Question 3. These are some of the types of data in CAD files which might be useful to communicate to SpecLink. Which types do you think would be most useful?

Keynotes	61 percent
Object/Element Names	49 percent
Object/Element Parameters	38 percent
Schedules	68 percent
Other	3 percent

This was actually the least useful of our questions — the answer is really "duh, all of the above."

Question 4. Select any of the following methods you currently use to coordinate drawings with the specifications:

Read the drawings, read the specs, and make them match.	77 percent
Extract a keynote list from the drawings to use when preparing the specs.	12 percent
Prepare a keynote list from the specs.	12 percent
Use the SpecLink automated Table of Contents.	33 percent
Other.	3 percent

SpecLink Quarterly Updates Keep Interplan Specifications Up-To-Date

Interplan LLC is a comprehensive development services company offering site evaluation, image development, architecture, engineering, interior design, permitting, and construction services.

Based in Orlando, Florida, the firm currently employs a staff of over 150, with total annual billings of \$10 million. Interplan is licensed in 48 states, the District of Columbia, Puerto Rico, and the U.S. Virgin Islands. From top to bottom, Interplan has built its operation to respond swiftly, accurately, and cost-effectively to solve specific client problems. As a result of this successful approach, client companies have experienced profitable results and have utilized Interplan's services to produce more than 20,000 sites since 1972.

The Need: The speed at which Interplan conducts business has never been faster. Timing is crucial - especially in the restaurant and hospitality industries. Companies providing architectural, design, and construction services for these markets need to be able to respond quickly and accurately. When Dennis Cabala, Director at Interplan Midwest, evaluated his specification writing process, he saw it as an area where they could both save time and increase accuracy.

The team at Interplan was spending large amounts of time doing research to ensure that all their spec data was current. This included confirming model numbers, examining industry standards – even checking to make certain that various manufacturers were still in business. Cabala wanted to find an easy-to-use, straightforward commercial master guide system for their specification writing – and one that would provide the updates he needed. In 2001, Interplan made the switch to SpecLink.

The Solution: Cabala says, "The quarterly updates we receive from SpecLink mean that we no longer have to do all the research. We

See "Survey" on page 4

See "Interplan" on page 5

About Your SpecLink & PerSpective Updates

SpecLink+ Statistics:

- 594 sections total, 188 updated or new (32%)
- 1 new non-proprietary section
- 519 non-proprietary sections, 177 updated or new (34%)
- 75 proprietary sections, 11 updated (15%)
- 37 sections with built-in checklists
- 98,071 paragraphs
- 107,903 internal links (targets and consequences)
- 23,343 notes to specifier
- 10,042 notes with live hyperlinks to Internet web pages
- 2,122 external documents referenced, with live hyperlinks to order information
- 955 ASTMs referenced, 6 new this quarter

- 1,167 other documents referenced, 86% verified this quarter*
- 183 standards organizations referenced
- 2,335 manufacturer listings, with live hyperlinks to their web sites
- 932 unique manufacturers listed in 365 non-proprietary sections

Short Form Specs Statistics:

- 16 sections corresponding to MasterFormat 1995 divisions
- 10 sections updated (63%)
- 8,304 paragraphs
- 821 notes to specifier
- 8,852 internal links (targets and consequences)
- 363 external documents referenced, 38% verified
- 225 ASTMs referenced

- 138 other documents referenced, 86% verified this quarter*
- 43 standards organizations referenced

PerSpective Performance Specs Statistics:

- 161 sections, 18 updated (14%)
- 17,377 paragraphs
- 21,866 internal links (targets and consequences)
- 3,879 notes to specifier, 604 with live hyperlinks
- 187 external documents referenced, with live hyperlinks to order information
- 49 ASTMs referenced
- 138 other documents referenced, 89% verified this quarter*
- 39 standards organizations referenced

* Documents issued more than two years ago are verified quarterly, as are annual or semi-annual publications. The documents not verified this quarter were updated within the past two years.

LEED™ Tips

New Section - Turf Surfaced Roadways: See page 4 for a full synopsis of this new section which can be used to address permanent erosion control, storm water runoff rate and quantity, and heat island effects. This section has been added to the LEED Credit Summary and LEED Requirements sections.

Water Conserving Plumbing Fixtures: As of this update, Section 15410 - Plumbing Fixtures includes Dual Flush Toilets and Sensor Operated Faucets. The faucets include several different varieties, including some that require no external power supply.

Construction Phase Administration of LEED Requirements: Did you know that SpecLink includes submittal forms for the Contractor to use to show compliance with the specified requirements intended to achieve LEED credits? The series of 8 sections starting at 01 3516 (01356) are designed to make life easier for both the A/E and the Contractor. Together with Section 01 6000 (01600) Product Requirements, which specifies many project-wide material requirements, these submittal forms address many of the MR credits.

LEED-Related Sections: Some other sections that may be applicable to your project are:

- 01 5713 (01575) - Temporary Erosion and Sedimentation Control
- 01 5721 (01734) - Indoor Air Quality
- 01 7419 (01732) - Construction Waste Management and Disposal
- 01 9113 (01810) - General Commissioning Requirements
- 23 0800 (15102) - Commissioning of HVAC
- 09 6223 (09644) - Bamboo Flooring
- 09 6229 (09629) - Cork Flooring

Updated LEED Checklist Sections: The LEED Credit Summary and LEED Requirements sections in SpecLink now reference Version 2.2 of LEED-NC. However, if your project is registered under Version 2.1 and you haven't started using these convenient checklists, you can still do so under Version 2.1. Just call BSD Support and ask for the LEED Version 2.1 project file and import the two sections into your project. The remainder of the specs are substantially the same. LEED is a trademark of the U.S. Green Buildings Council, www.usgbc.org.

New SpecLink Sections

32 1125 (02725) - Turf Surfaced Roadways:

Turf surfaced roadways are one variety of “permeable” or “porous” paving. The construction is not actually paving but rather a gravel roadway with grass on the top. The plastic grid reinforcement transfers the vehicular loads to the gravel base, avoiding ruts and keeping the grass alive.

Turf surfaced roadways can be used for permanent and overspill car parks; fire and service access roads; and drives, paths, and cycle routes. The grids create a structural bridge system that supports and distributes concentrated loads.

They also benefit landscape by providing vegetation support; slope and channel protection; load support; and earth retention as well as reducing area stormwater runoff. The FHWA also notes that for runoff applications, it is important to ensure that the surface infiltration rate is greater than the peak design rainfall intensity.

This section must be used with two other sections: 32 1123 (02721) - Aggregate Base Courses (for the gravel roadway), and either 32 9219 (02921) - Seeding, or 32 9223 (02923) - Sodding. ■

Substantially Revised SpecLink Sections

07 3113 (07313) - Wood Shingles and Shakes:

The species and grades available have been revised.

07 2400 (07240) - Exterior Insulation and Finish Systems:

Obsolete EIMA standards have been replaced with explicit text. Water-resistive barriers, drainage layers, and installation methods have been updated.

22 4000 (15410) - Plumbing Fixtures:

Water conserving dual-flush toilets and sensor-operated faucets have been added. ■

AISC Design Standards

AISC has replaced their structural steel design standards using either the Allowable Stress Design (ASD) method or the Load and Resistance Factor Design (LRFD) method with single-source standards. The 2005 Specification for Structural Steel Buildings (AISC 360) combines several ASD and LRFD documents, and is available as a free download at www.aisc.org. It is also included in the 2005 Steel Construction Manual (AISC 325), which combines the 1989 ASD Manual and the 2001 LRFD Manual. The changes have not significantly affected any SpecLink sections.

“Survey” continued from page 2

These were also pretty predictable results but stimulated a wide variety of comments along with the final question: “Do you have any other comments?”

- “What’s taking so long?”
- “It has to be SIMPLE to be useful.”
- “‘The software did it’ is not something I ever want to say to a client, a contractor, or another design professional...”
- “I would not trust a software only extraction of CAD notes, etc., to generate specs, only maybe to get the process started. We will continue to manually review and edit specs. It is the only way to ensure a truly coordinated project.”
- “I am not expecting to have a complete spec, but it would be nice if it helped get things jump started.”
- “It has always seemed like a good idea to be able to extract info from drawings for the specs, but the reality is that many times when the drawing is being created, decisions have not been made yet with regard to specific spec items.”
- “I would be concerned that it would lead you to a false sense of security that everything is being taken from the drawings.”
- “I can see some potential benefit, but am concerned that in practice, most of those who do the CAD work do not have the experience to make the proper choices of parameters that are crucial to producing a good spec.”
- “SpecLink should generate the keynotes, not read from them. In a perfect world, the connection will be two-way, so the question of which file reads which would be meaningless. If I wish to, I could run through the specs and that would then limit the drafter’s choices as to materials. Alternatively, the spec would be populated as I choose materials and add them to the model.”
- “It would be great to be able to link the specification items with the drawings in the form of ID’s and standard details.”
- “A better idea is to link CostLink/AE and SpecLink so that specs can be developed from cost estimates or the other way around.”

We agree with the cautious optimism of many of these respondents. Coordination, rather than automatic generation of the spec, will be our guiding principle in future development. BSD’s Susan McClendon made a presentation at the recent CSI Convention that explains in detail our concept of coordination versus automatic generation. To read more about it, see the presentation white paper, at www.csinet.org/s_csi/docs/12800/12723.pdf, and the slide show (for diagrams not in the paper), at www.bssoftlink.com/library/BSD_BIM&specs_2006.pps. ■

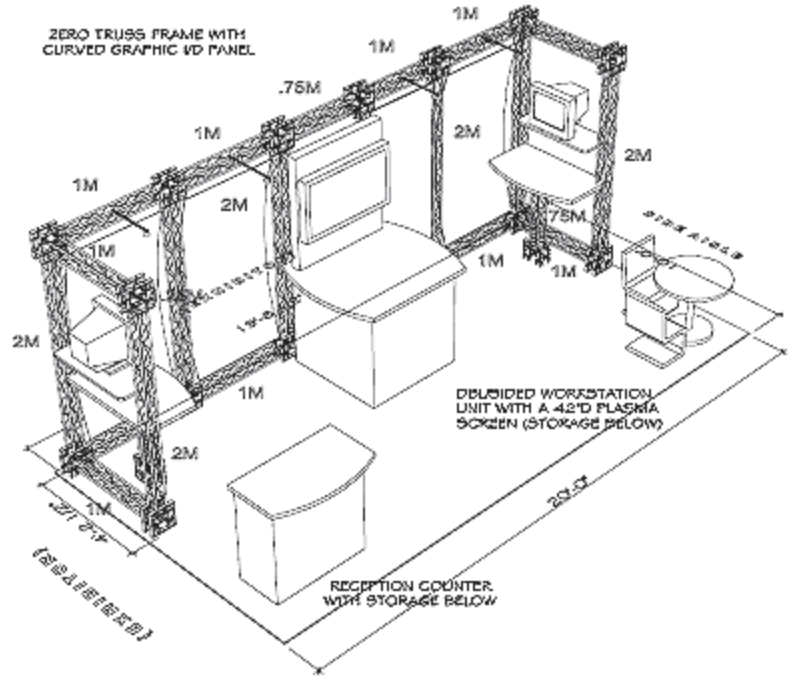
“Trade Shows” continued from page 1

20 minute presentations of our products every 45 minutes in the theater and frequently filled all the seats.

A smaller, 10 x 20 version of the booth will be introduced at the AIA convention in Los Angeles June 8-10. This in-line booth will have a small theater in the center, with workstations at either end. We will have scheduled presentations in the central theater and individualized demonstrations at the two workstations.

BSD also will have booths at the annual GreenBuild convention and the DBIA convention later this year. The 2006 Design-Build Expo will be held October 18-20 at the Gaylord Opryland Resort and Conference Center in Nashville, Tennessee. BSD will be showing both BSD SpecLink® and BSD CostLink®/AE. At GreenBuild, which will be held at the Colorado Convention Center in Denver, November 15-17, we will be showcasing BSD SpecLink’s recently updated LEED features.

In addition to these major shows, BSD is also participating in a series of seminars on stone tile that are being held in 36 cities around the country. The next group of seminars will be held in Orlando, Tampa, and Hollywood, Florida June 20-22. For more information and to register for any of the scheduled seminars, go to the website at www.stoneseminar.com. We hope to see many of our current and prospective customers at one or more of these events over the next few months.



10 x 20 layout

“Interplan” continued from page 2

know that the information SpecLink provides is up-to-date and accurate.

SpecLink contains all information we need to completely specify an item – without overlooking something like the quality or thickness of finish items. It gives us everything we need for accurate product selection.”

And if there is a specific manufacturer Interplan uses, that is no cause for concern, says Cabala, “With SpecLink we have the ability to create spec sections for manufacturers not in the master data base, adding the information to our Office Master.”

The Outcome: Interplan initially looked at SpecLink because it was so user friendly. And that continues to be a great benefit for them. Between the quarterly updates and ease of use, Cabala estimates that switching to SpecLink has resulted in time savings of 60%. One of their current projects reinforced their decision to use SpecLink. They were working on a specification for Bank One. “The program (SpecLink) allowed us to reuse previously written specifications. Because of the quarterly updates, we knew all of the data was the most current information available, making this one of our best spec projects to date using SpecLink.”



Bank One in Bolingbrook, IL

LinkLine

A BSD SoftLink® Publication

Editor: Niki Koplowitz

The LinkLine is published by Building Systems Design, Inc. 3520 Piedmont Road, NE Suite 415 Atlanta, GA 30305

Permission to use excerpts in other publications is granted provided the publisher is notified in advance at 404-365-8900.

BSD SpecLink, BSD CostLink and BSD SoftLink are registered trademarks, and BSD CadLink and BSD LinkMan are all trademarks of Building Systems Design, Inc.

Get the latest on BSD by visiting our web page at www.bsdssoftlink.com



All Products

Q Does your website have anywhere to search for information about use of your products or to learn more about an error code, for example?

A We have a knowledge base for our users that includes common usage and installation questions and common errors for SpecLink+, CostLink/AE and CostLink/CM. You can search by application or by type of question. To view, go to www.bsdssoftlink.com/support_qa.

SpecLink+ and PerSpective

Q I am getting the error “BSDSheetView generated Error 339: Component ‘DWSBC36.ocx or one of its dependencies not correctly registered: a file is missing or invalid.’ What can I do about this?

A This error is occurring because your anti-spyware software has removed or quarantined an essential BSD file as a threat. The BSD file is not a threat. It is an intermediary between SpecLink and Windows and is necessary for SpecLink to open a project. You need to remove the file from quarantine so SpecLink will run correctly. If you need more information about this error, contact Technical Support.

Q I would like to create a link within the same paragraph, so that if I select a choice near the beginning of the paragraph, it automatically selects a choice later in the paragraph.

A This cannot be done in SpecLink. A couple of solutions would be to create two different paragraphs and select the one that is appropriate, or to create a long choice field that includes both desired clauses. With both of these options, it is actually easier for the user to see what the whole

Q choice is.

I accidentally added a word to my SpecLink dictionary that was misspelled.

A How do I remove it?

Words commonly used by you that are not found in the standard SpecLink dictionary can be added to the custom dictionary. This is a text file named CUSTOM.DIC and it is found in the SpecLink+\System folder either on the local drive or on the server. (If you are running over a network the software usually uses the CUSTOM.DIC on the server.). This file can be edited using a text editor such as Notepad, and you can add and delete words to and from it directly. To edit the CUSTOM.DIC, close SpecLink, open CUSTOM.DIC in Notepad, and make any necessary edits. Be sure to type a return after the last item so that there is a blank line at the end of the file.

Q The names of several section titles are appearing in pink or magenta text in my Tree panel. What does that mean?

A In short, it means the project has not been completely updated. The software automatically identifies any section that has not been completely updated to the latest master by turning the document title magenta. To update the whole project, go to the Tools menu, select Update to Master, then select Update Project and click the Update button. You can also update only certain sections by selecting Update Section, selecting the section you want to update, and clicking the Update button. Once the sections are updated, the titles in the tree panel turn back to their normal colors — black or blue.

Note that SpecLink does not require that you update a project; there can be many legitimate reasons for not updating. The magenta titles simply act as reminders that those sections may contain obsolete data. You can open any of those sections at any time to see which paragraphs have updated versions available, and you can view the individual paragraph changes before updating them. You can also print a report that lists every paragraph in your project

affected by updates. For more detail on updating, see Chapter 11 in the updated User Manual on the latest BSD SoftLink CD-ROM or from our website at www.bsdssoftlink.com/support/sl_manual.htm.

CostLink/AE

Q I want to have both a junior high school and an elementary school within the same CostLink/AE estimate. Is there a way to do that?

A Yes. Basically you will create one model first, copy it to a different level one folder, disconnect it from the model and then create your next model. When you have included all the models that you need and have copied them all to new level one folders, change the first level one folder to No model. At this point you can input the total SF for the entire project so that the reports will display a square foot cost for the entire project. For more detailed instructions, see the Knowledge Base on our web page at www.bsdssoftlink.com/support_qa.

CostLink/CM

Q I finished my estimate and then switched to the CSI View and Assigned Tasks to Hierarchy to get a CSI summary. I then had to add some additional cost items and they ended up in the Unassigned folder. Why?

A Whenever you add costs to your estimate, they are placed in the Unassigned folders in all of the Primary Views until you assign them. There are two ways you can assign them: by dragging the cost items from the Unassigned folder to the appropriate folder, or if the tasks’ source tags match the folder IDs, you can use Assign Tasks to Hierarchy to assign the cost items to the appropriate folders automatically. ■

More questions?

Contact BSD Technical Support:

Toll Free: 800-266-7732

In Atlanta: 404-365-9226

Email: support@bsdssoftlink.com

“TNG” continued from page 1

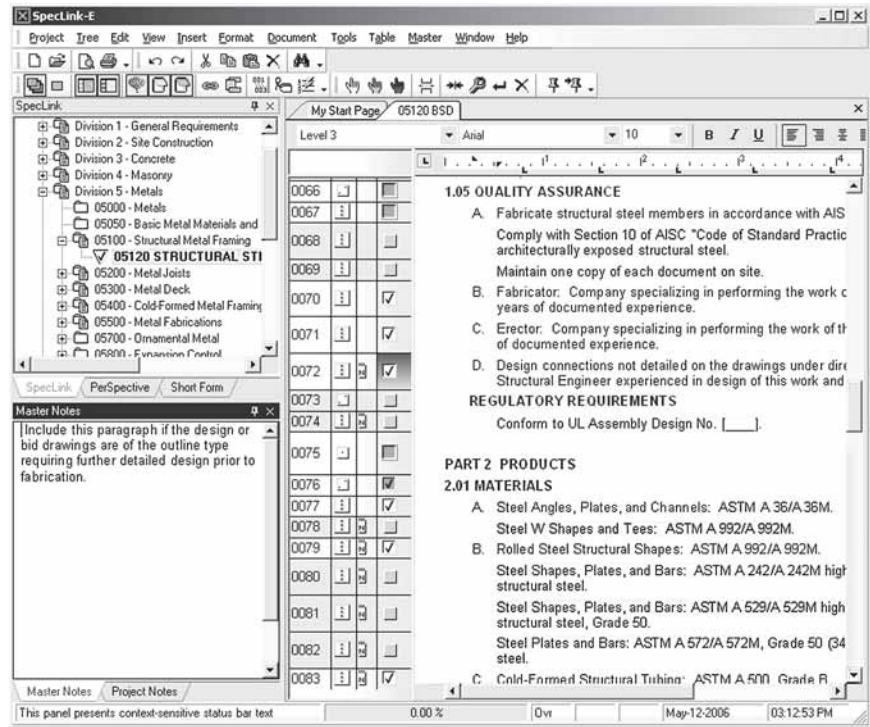
The notes panels can be “dragged” out of the main window and displayed as separate, sizable windows that are overlapping, along side of, or on a separate monitor from the main window. Notice also that multiple documents can be open in the main window and accessed by clicking on the tabs at the top of the main panel. Documents can be dragged to create separate window panels within the main window, allowing two documents to be placed side by side or one above the other.

Among the many new features, SpecLink-E provides enhancements to “global terms”. In the current SpecLink there are several terms (for example, Architect and Project Location) used throughout the documents whose actual text you can specify once for a whole project and have it inserted wherever the term is used. In E, global terms are expandable by both BSD and the user, allowing you to create new terms and use them anywhere in the project. For example, you might create a term named “project manager” and insert the term as many places as appropriate in your project template or office master. Then you simply enter the name or title of

the manager once and have it inserted wherever the term is used throughout each project.

We want to assure you that your SpecLink+ projects, including your office masters, will be convertible to SpecLink-E. We look

forward to further improving your productivity and the quality of your specifications with this delivery, which is targeted for the first half of 2007. In the next couple of issues of LinkLine, we’ll tell you more about the new features in SpecLink-E as it progresses toward delivery.



SpecLink-E

BSD's New Training Facility

We have made major improvements in our Atlanta training facility to better accommodate our SpecLink workshops. Each station has been upgraded with a faster computer, along with LED display monitors that take up less room and allow students to have a better visual of the instructor's display. Overhead, the ceiling-mounted projector has been replaced by a large LCD monitor mounted on the wall above the instructor. The training room can accommodate up to nine students, enabling one-on-one attention; it is intimate enough to share tips between businesses.

Although SpecLink is intuitive and easy to learn, many of our users tell us that coming to the class away from their office environment enables them to focus on learning the application without distractions. Day one of the workshop covers navigation and the basics of the software. Day two covers skills needed to create an office master project. Students can earn 14 AIA LU's or 14 CSI ECH's by attending both days of the workshop. See the back page of this newsletter for the upcoming training dates.



Training Schedule

The BSD SpecLink+ Workshop

The BSD SpecLink+ Workshop consists of two one-day workshops. The first day is devoted to learning the basics of SpecLink+, including how to navigate within the software, start a new project, edit sections, understand how the links and choices work, and how to format, print and export the final document. It is designed for new users. The second day is designed for those who want to learn how to create and maintain their own office master. This day covers the concepts of an office master, how to customize your master by adding choices, links, and tags, as well as creating your own checklists. Users must already be familiar with the basics of SpecLink+ to attend the second day.

BSD SpecLink+
Either Day* \$495
Both Days* \$895

June 13 - 14
July 18 - 19
September 12 - 13
October 17 - 18

AIA Members: We will report your course completion for 7 or 14 Continuing Education Units

CSI Members: Submit Course Completion Certificate for 7 or 14 Education Contact Hours (ECHs) toward your CCS, CCCA, or CCPR Certification renewal

* Class starts at 9:00 AM and ends at 5 PM.

BSD CostLink/CM
3 days* \$1295

Scheduled on a demand basis.
Call 888-273-7638.

AIA Members: Submit Course Completion Certificate for 24 Continuing Education Units

CSI Members: Submit Course Completion Certificate for 24 Education Contact Hours (ECHs) toward your CCS, CCCA, or CCPR Certification renewal

* Class starts at 9:00 AM and ends at 5 PM.

View BSD class schedules on our website! Go to www.bsdssoftlink.com and click the Training link. Get directions & information on travel, hotels, & Atlanta!



LinkLine

PRESORTED
STANDARD
U.S. POSTAGE
PAID
ATLANTA, GA
PERMIT NO. 6613

3520 Piedmont Road, NE
Suite 415
Atlanta, GA 30305